



ACCESSOIRES TUYAUTERIE

inter inOX.



L'OFFRE inter inox

- + UN STOCK UNIQUE
- + UNE GAMME COMPLÈTE ET COMPLÉMENTAIRE
- + UNE LIVRAISON SOUS 24/48H

CHER CLIENT,

La société Inter-Inox, spécialiste français de la fixation et de l'assemblage en acier inoxydable depuis 1978, vous propose une large gamme de produits de qualité répondant à toutes vos exigences, dans tous les univers : agro-alimentaire, bâtiment, chimie, maritime, ferroviaire, automobile ...

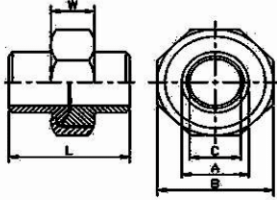
Chaque produit a été sélectionné avec soin par nos équipes spécialisées, avec la rigueur d'une entreprise certifiée. Et grâce à la performance de nos services, votre réactivité est assurée.

Nous espérons que vous prendrez plaisir à découvrir l'ensemble de notre gamme.



Inox 316

Raccord union Lisse - Lisse à portée conique



de 1/4" à 3/8" = Hexagon, de 1/2" à 1" = Octagon, de 1-1/4" à 2" = Decagon

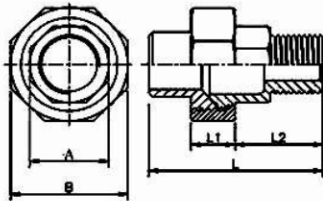
SIZE	RULL-4-8	RULL-4-10	RULL-4-15	RULL-4-20	RULL-4-25	RULL-4-32	RULL-4-40	RULL-4-50
	1/4"	3/8"	1/2"	3/4"	1"	1-1/4"	1-1/2"	2"
	mm	mm	mm	mm	mm	mm	mm	mm
L	34	38	40	47.5	49.5	54	56	59
A	13.5	17.3	21.6	27.1	33.8	42.8	48.6	60.6
B	28	34.5	39	46	55	63.2	71	86
C	8.5	12.6	16	21.5	27	36	41.8	52.7
W	12	14	15	15	17	20	20	22

Tolerance: L \pm 1.5 mm

A,B,C,W \pm 0.5 mm

Inox 316

Raccord union Lisse - Mâle à portée conique



de 1/4" à 3/8" = Hexagon, de 1/2" à 1" = Octagon, de 1-1/4" à 2" = Decagon

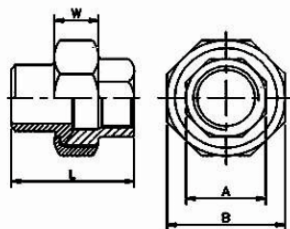
SIZE	RULM-4-8	RULM-4-10	RULM-4-15	RULM-4-20	RULM-4-25	RULM-4-32	RULM-4-40	RULM-4-50
	1/4"	3/8"	1/2"	3/4"	1"	1-1/4"	1-1/2"	2"
	mm	mm	mm	mm	mm	mm	mm	mm
A	17.3	21.5	26.5	31	38	47	53	66.8
B	28	34.5	39	46	55	63.2	71	86
L	45	53	53	60	66	74	74	83
L1	12	14.5	15	15	17	20	20	22
L2	21	26	26	29	32	34.5	34.5	39

Tolerance: L \pm 1.5 mm

A,B,L1,L2 \pm 0.5 mm

Inox 316

Raccord union Lisse - Femelle à portée conique



de 1/4" à 3/8" = Hexagon, de 1/2" à 1" = Octagon, de 1-1/4" à 2" = Decagon

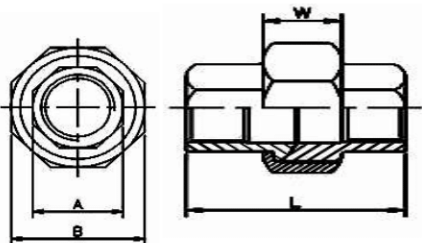
SIZE	RULF-4-8	RULF-4-10	RULF-4-15	RULF-4-20	RULF-4-25	RULF-4-32	RULF-4-40	RULF-4-50
	1/4"	3/8"	1/2"	3/4"	1"	1-1/4"	1-1/2"	2"
	mm	mm	mm	mm	mm	mm	mm	mm
L	34	38	40.5	45	51	58	59	64
A	17.3	21.5	26.5	31	38	47	53	66.8
B	28	34.5	39	45.8	55	63.2	71	86
W	12	14	15	15	17	20	20	22

Tolerance: L \pm 1.5 mm

A,B,W = \pm 0.5 mm

Inox 316

Raccord union Femelle - Femelle à portée conique



de 1/4" à 3/8" = Hexagon, de 1/2" à 1" = Octagon, de 1-1/4" à 2" = Decagon

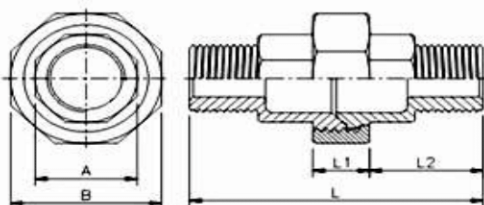
SIZE	RUFF-4-8	RUFF-4-10	RUFF-4-15	RUFF-4-20	RUFF-4-25	RUFF-4-32	RUFF-4-40	RUFF-4-50
	1/4" mm	3/8" mm	1/2" mm	3/4" mm	1" mm	1-1/4" mm	1-1/2" mm	2" mm
L	34	38	40.5	45	51	58	59	64.01
A	17.3	21.5	26.5	31	38	47	53	66.80
B	28	34.54	39	45.8	55	63.2	71	86
W	12	13.97	15	15	17.02	20	20	22

Tolerance: L \pm 1.5 mm

A,B,W = + 0.5 mm

Inox 316

Raccord union Mâle - Mâle à portée conique



de 1/4" à 3/8" = Hexagon, de 1/2" à 1" = Octagon, de 1-1/4" à 2" = Decagon

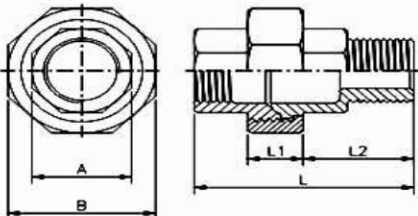
SIZE	RUMM-4-8	RUMM-4-10	RUMM-4-15	RUMM-4-20	RUMM-4-25	RUMM-4-32	RUMM-4-40	RUMM-4-50
	1/4" mm	3/8" mm	1/2" mm	3/4" mm	1" mm	1-1/4" mm	1-1/2" mm	2" mm
A	17.3	21.5	26.5	31	38	47	53	66.8
B	28	34.5	39	45.7	55	63.2	71	86
L	54	66	67	73	81	89	89	100
L1	12	14	15	15	17	20	20	22
L2	21	26	26	29	32	34.5	34.5	39

Tolerance: L \pm 1.5 mm

A,B,L1,L2 + 0.5 mm

Inox 316

Raccord union Mâle - Femelle à portée conique

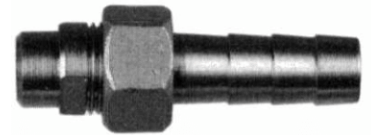
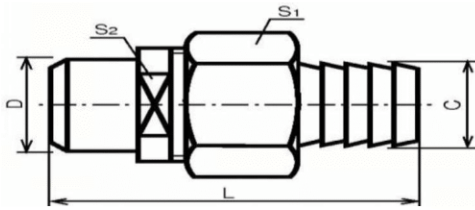


de 1/4" à 3/8" = Hexagon, de 1/2" à 1" = Octagon, de 1-1/4" à 2" = Decagon

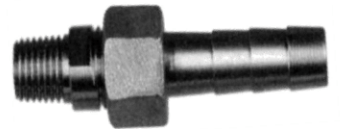
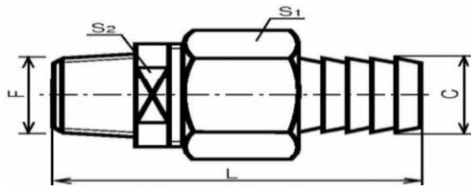
SIZE	RUMF-4-8	RUMF-4-10	RUMF-4-15	RUMF-4-20	RUMF-4-25	RUMF-4-32	RUMF-4-40	RUMF-4-50
	1/4" mm	3/8" mm	1/2" mm	3/4" mm	1" mm	1-1/4" mm	1-1/2" mm	2" mm
A	17.3	21.5	26.5	31	38	47	53	66.8
B	28	34.5	39	46	55	63.2	71	86
L	45	53	53	60	66	74	74	83
L1	12	14.5	15	15	17	20	20	22
L2	21	26	26	29	32	34.5	34.5	39

Tolerance: L \pm 1.5 mm

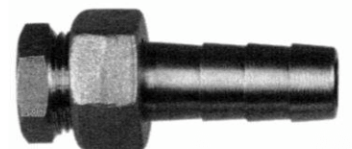
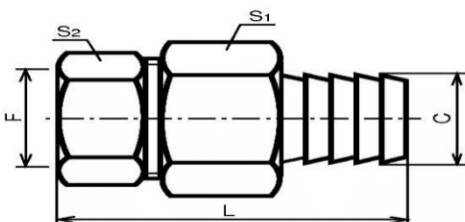
A,B,L1,L2 + 0.5 mm

Inox 316**Raccord union Lisse - Cannelé à portée conique**

SIZE	RULC-4-8	RULC-4-10	RULC-4-15	RULC-4-20	RULC-4-25	RULC-4-32	RULC-4-40	RULC-4-50
	1/4" mm	3/8" mm	1/2" mm	3/4" mm	1" mm	1-1/4" mm	1-1/2" mm	2" mm
L	13,5	17,2	21,3	26,9	33,7	42,4	48,3	60,3
S1	63	65	68	70	71	73	77	82
S2	21	27	32	38	46	55	63	75
C	14	17	22	27	35	46	53	63

Tolerance: ± 0.5 mm**Inox 316****Raccord union Mâle - Cannelé à portée conique**

SIZE	RUMC-4-8	RUMC-4-10	RUMC-4-15	RUMC-4-20	RUMC-4-25	RUMC-4-32	RUMC-4-40	RUMC-4-50
	1/4" mm	3/8" mm	1/2" mm	3/4" mm	1" mm	1-1/4" mm	1-1/2" mm	2" mm
L	66	68	74	75	81	85	87	92
S1	21	27	32	38	46	55	63	75
S2	14	17	22	27	35	46	53	63
C	12,8	16,3	20,7	26,2	33	41,6	48	59

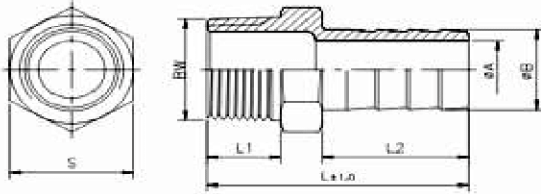
Tolerance: ± 0.5 mm**Inox 316****Raccord union Femelle - Cannelé à portée conique**

SIZE	RUFC-4-8	RUFC-4-10	RUFC-4-15	RUFC-4-20	RUFC-4-25	RUFC-4-32	RUFC-4-40	RUFC-4-50
	1/4" mm	3/8" mm	1/2" mm	3/4" mm	1" mm	1-1/4" mm	1-1/2" mm	2" mm
L	58	60	63	65	69	70	75	80
S1	21	27	32	38	46	55	63	75
S2	17	23	27	36	42	52	60	70
C	12,8	16,3	20,7	26,2	33	44,6	48	59

Tolerance: ± 0.5 mm

Inox 316

Adaptateur hexagonal Mâle - Cannelé

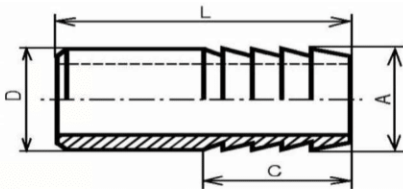


SIZE	AHMC-4-8	AHMC-4-10	AHMC-4-15	AHMC-4-20	AHMC-4-25	AHMC-4-32	AHMC-4-40	AHMC-4-50
	1/4"	3/8"	1/2"	3/4"	1"	1-1/4"	1-1/2"	2"
	mm	mm	mm	mm	mm	mm	mm	mm
A	5	6.5	9	15	19.5	26	33	44
B	8	10	13	19	25	32	40	51.5
L1	11	13	16	16	20	22	22	23
L2	29	33	33	34	39	39	48	54
L	46	53	56	60	69	70	80	88
S	15	19	23	29	35	45	51	62
BW	13.5	17.3	21.6	26.8	33.7	42.5	48.5	60.2

Tolerance: ± 0.5 mm

Inox 316

Adaptateur Lisse - Cannelé

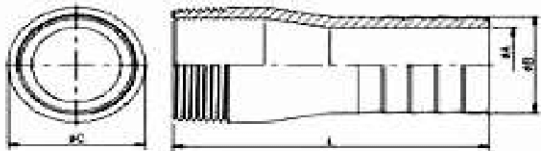


SIZE	ALC-4-8	ALC-4-10	ALC-4-15	ALC-4-20	ALC-4-25	ALC-4-32	ALC-4-40	ALC-4-50
	1/4"	3/8"	1/2"	3/4"	1"	1-1/4"	1-1/2"	2"
	mm	mm	mm	mm	mm	mm	mm	mm
D	13,5	17,2	21,3	26,1	33,7	42,4	48,3	60,3
A	12,8	16,3	21,3	26,1	33	41,6	46	57
C	24	24	24	32	32	32	32	32
L	38	40	45	60	60	65	65	65

Tolerance: ± 0.5 mm

Inox 316

Adaptateur cylindrique Mâle - Cannelé

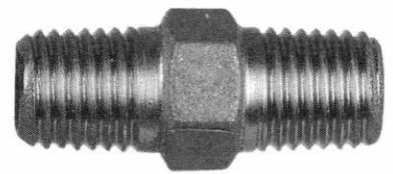
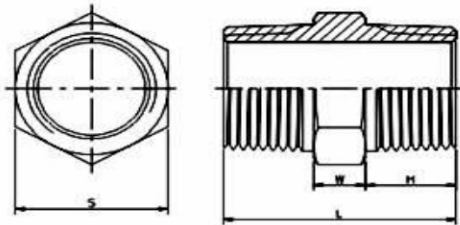


SIZE	ACMC-4-8	ACMC-4-10	ACMC-4-15	ACMC-4-20	ACMC-4-25	ACMC-4-32	ACMC-4-40	ACMC-4-50
	1/4"	3/8"	1/2"	3/4"	1"	1-1/4"	1-1/2"	2"
	mm	mm	mm	mm	mm	mm	mm	mm
A	3.96	5.94	9.12	15.6	19.1	25.4	31.75	44.45
B	6.48	9.56	13.6	19.6	26.1	33	39	51.6
C	13.8	17.2	21.3	26.7	33.4	42.2	48.3	60.3
L	42	47	50	60	62	63	65	70

Tolerance: ± 1.0 mm

Inox 316

Mamelon hexagonal

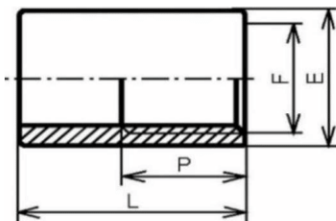


SIZE	MAH-4-8	MAH-4-10	MAH-4-15	MAH-4-20	MAH-4-25	MAH-4-32	MAH-4-40	MAH-4-50
	1/4"	3/8"	1/2"	3/4"	1"	1-1/4"	1-1/2"	2"
	mm	mm	mm	mm	mm	mm	mm	mm
H	13	13	16	17.5	19.5	21	21	23
L	32	33	41	43.5	49	52	52	57
S	15	18.5	22.5	29.0	35	45	50	62
W	6	6	8	8.5	9	10	10	11

Tolerance: ± 1.0 mm

Inox 316

Embout Femelle

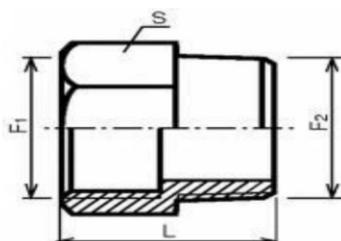


SIZE	EMF-4-8	EMF-4-10	EMF-4-15	EMF-4-20	EMF-4-25	EMF-4-32	EMF-4-40	EMF-4-50
	1/4"	3/8"	1/2"	3/4"	1"	1-1/4"	1-1/2"	2"
	mm	mm	mm	mm	mm	mm	mm	mm
L	22	23	30	30	35	36	40	40
P	10	10	13	14	17	18	18	20
E	16	21	25	33	38	48	56	63

Tolerance: ± 0.5 mm

Inox 316

Adaptateur Mâle - Femelle

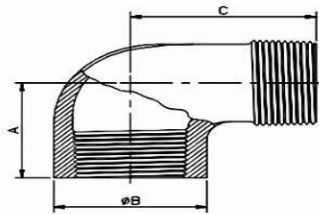


SIZE	AFM-4-8	AFM-4-10	AFM-4-15	AFM-4-20	AFM-4-25	AFM-4-32	AFM-4-40	AFM-4-50
	1/4"	3/8"	1/2"	3/4"	1"	1-1/4"	1-1/2"	2"
	mm	mm	mm	mm	mm	mm	mm	mm
S	17	21	24	30	38	46	55	65
L	26	29	33	40	46	50	50	57

Tolerance: ± 0.5 mm

Inox 316

Coude Mâle - Femelle 90°

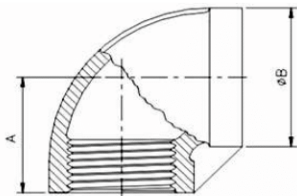


SIZE	CMF-4-8	CMF-4-10	CMF-4-15	CMF-4-20	CMF-4-25	CMF-4-32	CMF-4-40	CMF-4-50
	1/4"	3/8"	1/2"	3/4"	1"	1-1/4"	1-1/2"	2"
	mm	mm	mm	mm	mm	mm	mm	mm
A	21.5	24.5	29	33.5	37	43	47	57.5
B	18.2	22.5	28	33.5	42	52	59	72
C	30.8	36.5	41	48	55	62	67	77.5

Tolerance: ± 1.0 mm

Inox 316

Coude Femelle - Femelle 90°

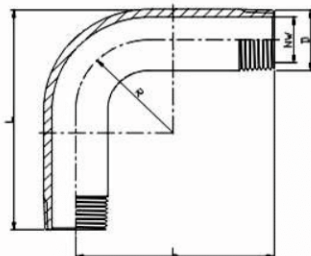


SIZE	CFF-4-8	CFF-4-10	CFF-4-15	CFF-4-20	CFF-4-25	CFF-4-32	CFF-4-40	CFF-4-50
	1/4"	3/8"	1/2"	3/4"	1"	1-1/4"	1-1/2"	2"
	mm	mm	mm	mm	mm	mm	mm	mm
A	19	21.5	27	30	35	43	45	54
B	19	22.5	29	34	42	50	57	70

Tolerance: ± 1.0 mm

Inox 316

Coude Mâle - Mâle grand rayon

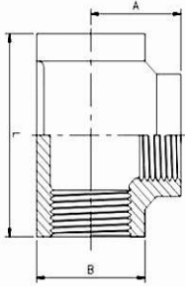


SIZE	CMM-4-8	CMM-4-10	CMM-4-15	CMM-4-20	CMM-4-25	CMM-4-32	CMM-4-40	CMM-4-50
	1/4"	3/8"	1/2"	3/4"	1"	1-1/4"	1-1/2"	2"
	mm	mm	mm	mm	mm	mm	mm	mm
D	13.5	17.2	21.3	26.9	33.7	42.4	48.3	60.3
L	60	70	80	100	120	140	160	190
R	40	45	55	70	80	105	115	125
NW	8	10	15	20	25	32	40	50

Tolerance: ± 1.0 mm

Inox 316

Té femelle

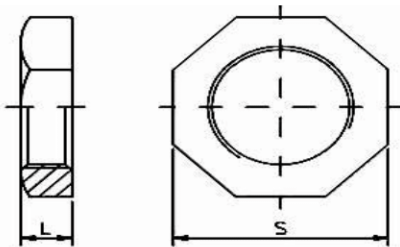


SIZE	TF-4-8	TF-4-10	TF-4-15	TF-4-20	TF-4-25	TF-4-32	TF-4-40	TF-4-50
	1/4"	3/8"	1/2"	3/4"	1"	1-1/4"	1-1/2"	2"
	mm	mm	mm	mm	mm	mm	mm	mm
A	19.6	23.5	27.5	32	36	43	45	54
B	18.8	22.5	29	34	41.5	50	57	70
L	39	46	55	62	72	86	90	108

Tolerance: ± 1.0 mm

Inox 316

Ecrou hexagonal

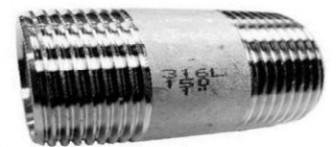
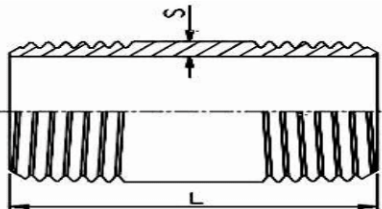


SIZE	H-4-8	H-4-10	H-4-15	H-4-20	H-4-25	H-4-32	H-4-40	H-4-50
	1/4"	3/8"	1/2"	3/4"	1"	1-1/4"	1-1/2"	2"
	mm	mm	mm	mm	mm	mm	mm	mm
L	7	7	8	9	9	11	12	13
S	18	24	30	34.5	43	52	58	72

Tolerance: ± 1.0 mm

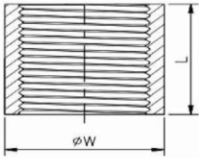
316 L

Mamelon cylindrique

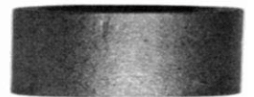
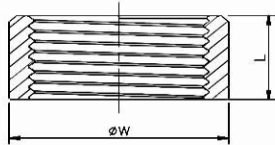


SIZE	MAC-4-8	MAC-4-10	MAC-4-15	MAC-4-20	MAC-4-25	MAC-4-32	MAC-4-40	MAC-4-50
	1/4"	3/8"	1/2"	3/4"	1"	1-1/4"	1-1/2"	2"
	mm	mm	mm	mm	mm	mm	mm	mm
S	2	2	2.5	2.5	3.2	3.2	3.2	3.6
L	40	40	60	60	60	80	80	100

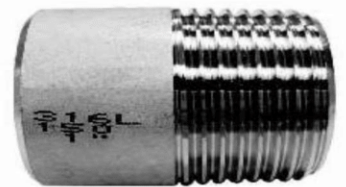
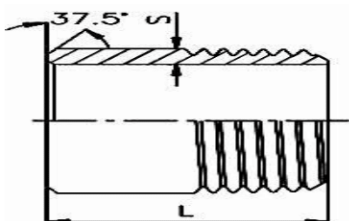
Tolerance: ± 1.0 mm

316 L**Manchon**

SIZE	MAN-4-8	MAN-4-10	MAN-4-15	MAN-4-20	MAN-4-25	MAN-4-32	MAN-4-40	MAN-4-50
	1/4"	3/8"	1/2"	3/4"	1"	1-1/4"	1-1/2"	2"
	mm	mm	mm	mm	mm	mm	mm	mm
L	25	25	33	35	42	47	47	56
W	18.5	21.5	26	32	39	48	54	66.5

Tolerance: L \pm 1.5 mmW \pm 1.0 mm**316 L****Demi - manchon**

SIZE	DMAN-4-8	DMAN-4-10	DMAN-4-15	DMAN-4-20	DMAN-4-25	DMAN-4-32	DMAN-4-40	DMAN-4-50
	1/4"	3/8"	1/2"	3/4"	1"	1-1/4"	1-1/2"	2"
	mm	mm	mm	mm	mm	mm	mm	mm
L	11	14	16	18	20	23	23	27
W	18.5	21.5	26	32	39	48	54	66.5

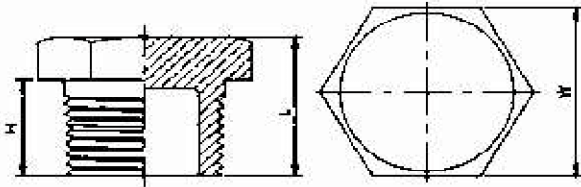
Tolerance: L \pm 1.5 mmW \pm 1.0 mm**316 L****Embout Mâle**

SIZE	EMM-4-8	EMM-4-10	EMM-4-15	EMM-4-20	EMM-4-25	EMM-4-32	EMM-4-40	EMM-4-50
	1/4"	3/8"	1/2"	3/4"	1"	1-1/4"	1-1/2"	2"
	mm	mm	mm	mm	mm	mm	mm	mm
S	2	2	2.5	2.5	3.2	3.2	3.2	3.6
L	30	30	35	40	40	50	50	50

Tolerance: \pm 1.0 mm

Inox 316

Bouchon Mâle tête hexagonale Gaz conique



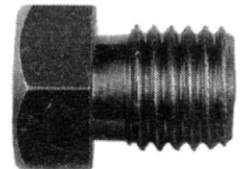
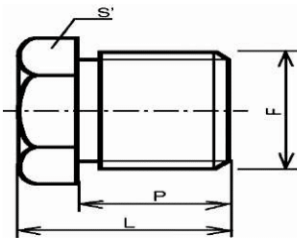
de 1/4" à 2" = Hexagon

SIZE	BOM-4-8	BOM-4-10	BOM-4-15	BOM-4-20	BOM-4-25	BOM-4-32	BOM-4-40	BOM-4-50
	1/4"	3/8"	1/2"	3/4"	1"	1-1/4"	1-1/2"	2"
	mm	mm	mm	mm	mm	mm	mm	mm
H	12	13.5	16	16.5	19	21.5	22	23
L	17.5	19.5	22	23.5	27	31	31.5	34
W	16.5	19.5	25	30	37.2	46	51.5	63.5

Tolerance: ± 1.0 mm

Inox 316

Bouchon Mâle tête hexagonale Gaz cylindrique



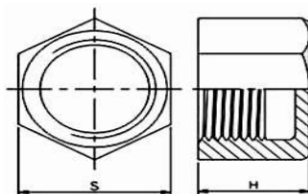
de 1/4" à 2" = Hexagon

SIZE	BOMC-4-8	BOMC-4-10	BOMC-4-15	BOMC-4-20	BOMC-4-25	BOMC-4-32	BOMC-4-40	BOMC-4-50
	1/4"	3/8"	1/2"	3/4"	1"	1-1/4"	1-1/2"	2"
	mm	mm	mm	mm	mm	mm	mm	mm
L	17	17	21	21	26	27	31	32
P	11	11	14	14	18	18	19	20
S'	17	24	27	30	38	50	60	70

Tolerance: ± 0.5 mm

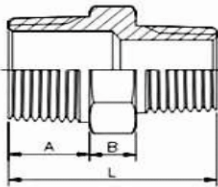
Inox 316

Bouchon Femelle



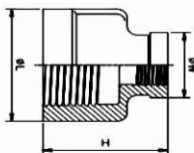
SIZE	BOF-4-8	BOF-4-10	BOF-4-15	BOF-4-20	BOF-4-25	BOF-4-32	BOF-4-40	BOF-4-50
	1/4"	3/8"	1/2"	3/4"	1"	1-1/4"	1-1/2"	2"
	mm	mm	mm	mm	mm	mm	mm	mm
S	17.5	21	26	31	38.5	47	54	66
H	17	17	21	21	28	31.5	31.5	35

Tolerance: ± 1.0 mm



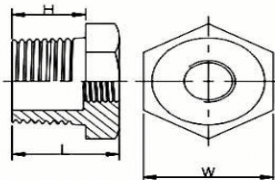
SIZE	RMM-4-108	RMM-4-158	RMM-4-1510	RMM-4-208	RMM-4-2010	RMM-4-2015	RMM-4-258	RMM-4-2510
	3/8 x 1/4 mm	1/2 x 1/4 mm	1/2 x 3/8 mm	3/4 x 1/4 mm	3/4 x 3/8 mm	3/4 x 1/2 mm	1 x 1/4 mm	1 x 3/8 mm
A	15	16.5	16.5	17.5	17.5	17.5	20	20
B	7	7	7	7	7	7	9	9
W	19.7	23	23	28.7	28.7	28.7	36	36
L	34.5	36.5	36.5	41	41	41	42	42
SIZE	RMM-4-2515	RMM-4-2520	RMM-4-3210	RMM-4-3215	RMM-4-3220	RMM-4-3225	RMM-4-4015	RMM-4-4020
	1 x 1/2 mm	1 x 3/4 mm	1-1/4 x 3/8 mm	1-1/4 x 1/2 mm	1-1/4 x 3/4 mm	1-1/4 x 1 mm	1-1/2 x 1/2 mm	1-1/2 x 3/4 mm
A	20	20	21.8	21.8	21.8	21.8	21.6	21.6
B	9	9	10.5	10.5	10.5	10.5	10.5	10.5
W	36	36	45.5	45.5	45.5	45.5	51	51
L	42	42	47	49	49	52.5	49	49
SIZE	RMM-4-4025	RMM-4-4032	RMM-4-5020	RMM-4-5025	RMM-4-5032	RMM-4-5040		
	1-1/2 x 1 mm	1-1/2x1-1/4 mm	2 x 3/4 mm	2 x 1 mm	2 x 1-1/4 mm	2 x 1-1/2 mm		
A	21.6	21.6	24	24	24	24		
B	10.5	10.5	10.5	10.5	10.5	10.5		
W	51	51	63	63	63	63		
L	55	55	54	54	56	56		

Tolerance: ± 1.0 mm



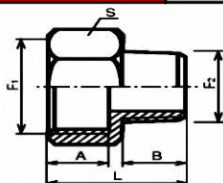
SIZE	RFF-4-108	RFF-4-158	RFF-4-1510	RFF-4-2010	RFF-4-2015	RFF-4-2510	RFF-4-2515	RFF-4-2520
	3/8 x 1/4 mm	1/2 x 1/4 mm	1/2 x 3/8 mm	3/4 x 3/8 mm	3/4 x 1/2 mm	1 x 3/8 mm	1 x 1/2 mm	1 x 3/4 mm
L	22	28	28	34	34	42	42	42
H	29	34	34	36	36	41	41	42
W	18.3	19.5	23	28	28	28	28	33.8
SIZE	RFF-4-3215	RFF-4-3220	RFF-4-3225	RFF-4-4015	RFF-4-4020	RFF-4-4025	RFF-4-4032	RFF-4-5020
	1-1/4 x 1/2 mm	1-1/4 x 3/4 mm	1-1/4 x 1 mm	1-1/2 x 1/2 mm	1-1/2 x 3/4 mm	1-1/2 x 1 mm	1-1/2 x 1- mm	2 x 3/4 mm
L	50	50	50	57	57	57	57	70
H	46	46	47	47	47.5	49	51	55
W	33.8	34	41.5	34	34	41.5	50	41.5
SIZE	RFF-4-5025	RFF-4-5032	RFF-4-5040	RFF-4-6532	RFF-4-6540	RFF-4-6550		
	2 x 1 mm	2 x 1-1/4 mm	2 x 1-1/2 mm	2-1/2 x 1- mm	2-1/2 x 1- mm	2-1/2 x 2 mm		
L	70	70	70	88	88	88		
H	55	59	59	58.7	61	61		
W	41.5	57	57	50.5	57	70		

Tolerance: ± 1.0 mm



SIZE	RMF-4-108	RMF-4-158	RMF-4-1510	RMF-4-208	RMF-4-2010	RMF-4-2015	RMF-4-258	RMF-4-2510
	3/8 x 1/4	1/2 x 1/4	1/2 x 3/8	3/4 x 1/4	3/4 x 3/8	3/4 x 1/2	1 x 1/4	1 x 3/8
	mm	mm	mm	mm	mm	mm	mm	mm
L	17.5	22	22	23	23	23	27.5	27.5
H	12	16	16	17	17	17	20	20
W	21	25	25	30	30	30	37	37
SIZE	RMF-4-2515	RMF-4-2520	RMF-4-3215	RMF-4-3220	RMF-4-3225	RMF-4-4015	RMF-4-4020	RMF-4-4025
	1 x 1/2	1 x 3/4	1-1/4 x 1/2	1-1/4 x 3/4	1-1/4 x 1	1-1/2 x 1/2	1-1/2 x 3/4	1-1/2 x 1
	mm	mm	mm	mm	mm	mm	mm	mm
L	27.5	27.5	30	30	30	30.5	30.5	30.5
H	20	20	21.5	21.5	21.5	22	22	22
W	37	37	46	46	46	50	50	50
SIZE	RMF-4-4032	RMF-4-5020	RMF-4-5025	RMF-4-5032	RMF-4-5040	RMF-4-6525	RMF-4-6532	RMF-4-6540
	1-1/2 x 1-	2 x 3/4	2 x 1	2 x 1-1/4	2 x 1-1/2	2-1/2 x 1	2-1/2 x 1-	2-1/2 x 1-
	mm	mm	mm	mm	mm	mm	mm	mm
L	30.5	33.5	33.5	33.5	33.5	40	40	40
H	22	23.5	23.5	23.5	23.5	29	29	29
W	50	62	62	62	62	80	80	80
SIZE	RMF-4-6550	RMF-4-8050	RMF-4-8065					
	2-1/2 x 2	3 x 2	3 x 2-1/2					
	mm	mm	mm					
L	40	41	41					
H	29	29	29					
W	80	92	92					

Tolerance: ± 1.0 mm

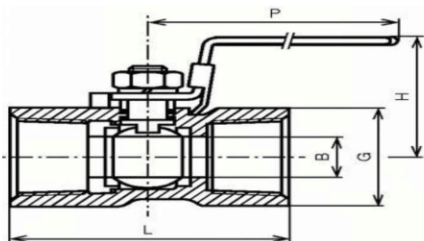


SIZE	RFM-4-108	RFM-4-158	RFM-4-1510	RFM-4-208	RFM-4-2010	RFM-4-2015	RFM-4-2510	RFM-4-2515
	3/8 x 1/4	1/2 x 1/4	1/2 x 3/8	3/4 x 1/4	3/4 x 3/8	3/4 x 1/2	1 x 3/8	1 x 1/2
	mm	mm	mm	mm	mm	mm	mm	mm
S	23	24	24	30	30	30	38	38
L	28	30	30	33	33	36	40	40
A	14	16	16	19	19	19	22	22
B	11	11	11	11	11	14	14	14
SIZE	RFM-4-2520	RFM-4-3220	RFM-4-3225	RFM-4-4025	RFM-4-4032	RFM-4-5032	RFM-4-5040	RFM-4-6540
	1 x 3/4	1-1/4 x 3/4	1-1/4 x 1	1-1/2 x 1	1-1/2 x 1-	2 x 1-1/4	2 x 1-1/2	2-1/2 x 1-
	mm	mm	mm	mm	mm	mm	mm	mm
S	38	50	50	55	55	65	65	80
L	40	48	48	49	49	51	51	59
A	22	25	25	26	26	27	27	28
B	14	18	18	18	18	19	19	25
SIZE	RFM-4-6550	RFM-4-8050	RFM-4-8065					
	2-1/2 x 2	3 x 2	3 x 2-1/2					
	mm	mm	mm					
S	80	90	90					
L	59	65	65					
A	28	29	29					
B	25	30	30					

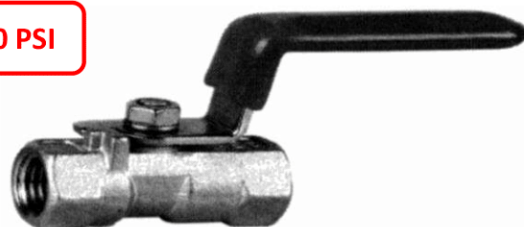
Tolerance: ± 0.5 mm

Inox 316

Robinet monobloc Femelle - Femelle passage réduit



PN 63 = 1000 PSI

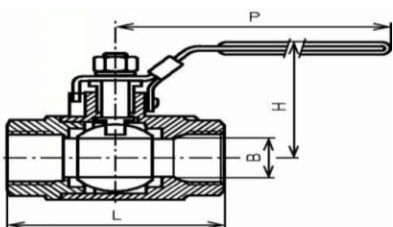


SIZE	ROB1FF-4-8	ROB1FF-4-10	ROB1FF-4-15	ROB1FF-4-20	ROB1FF-4-25	ROB1FF-4-32	ROB1FF-4-40	ROB1FF-4-50
	DN 8 mm	DN 10 mm	Dn 15 mm	DN 20 mm	DN 25 mm	DN 32 mm	DN 40 mm	DN 50 mm
B	5	7	9	12,5	15	20	24,5	32
L	39	44	56,5	58	71	78	83	100
H	35	37	43,5	47	50	57	69	74,5
P	67	70	90	90	103	103	127	127

Tolerance: ± 1.0 mm

Inox 316

Robinet 2 pièces Femelle - Femelle passage Intégral



PN 63 = 1000 PSI

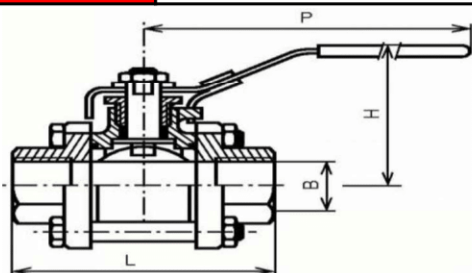


SIZE	ROB2FF-4-8	ROB2FF-4-10	ROB2FF-4-15	ROB2FF-4-20	ROB2FF-4-25	ROB2FF-4-32	ROB2FF-4-40	ROB2FF-4-50
	DN 8 mm	DN 10 mm	Dn 15 mm	DN 20 mm	DN 25 mm	DN 32 mm	DN 40 mm	DN 50 mm
B	10	12	15	20	25	32	40	50
L	51	51	58	66	79	90	105	124
H	56	58	59	62	78	83	102	111
P	98	98	98	123	145	145	188	188

Tolerance: ± 1.0 mm

Inox 316

Robinet 3 pièces Femelle - Femelle passage intégral



PN 63 = 1000 PSI

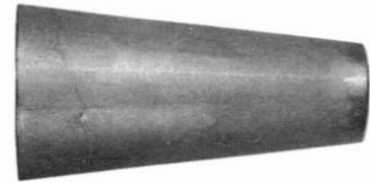
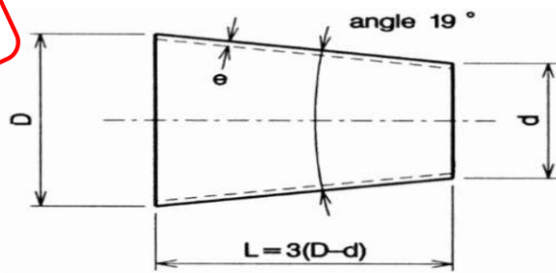


SIZE	ROB3FF-4-8	ROB3FF-4-10	ROB3FF-4-15	ROB3FF-4-20	ROB3FF-4-25	ROB3FF-4-32	ROB3FF-4-40	ROB3FF-4-50
	DN 8 mm	DN 10 mm	Dn 15 mm	DN 20 mm	DN 25 mm	DN 32 mm	DN 40 mm	DN 50 mm
B	12	12,7	15	20	25	32	38	50
L	65	65	65	77	89	103	115	134
H	60	60	63	65	80	85	100	108
P	100	100	100	125	149	149	190	190

Tolerance: ± 1.0 mm

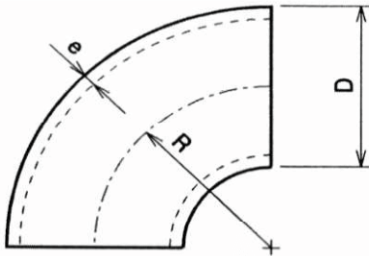
$$L=3(D-d)$$

Certificat 3.1B
disponible



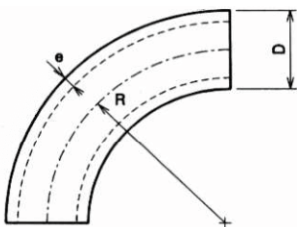
L	D	d	304 L	316 L
23	21,3	13,7	RC-2-2113	RC-4-2113
12	21,3	17,2	RC-2-2117	RC-4-2117
40	26,9	13,7	RC-2-2613	RC-4-2613
29	26,9	17,2	RC-2-2617	RC-4-2617
17	26,9	21,3	RC-2-2621	RC-4-2621
50	33,7	17,2	RC-2-3317	RC-4-3317
37	33,7	21,3	RC-2-3321	RC-4-3321
20	33,7	26,9	RC-2-3326	RC-4-3326
63	42,4	21,3	RC-2-4221	RC-4-4221
46	42,4	26,9	RC-2-4226	RC-4-4226
26	42,4	33,7	RC-2-4233	RC-4-4233
81	48,3	21,3	RC-2-4821	RC-4-4821
64	48,3	26,9	RC-2-4826	RC-4-4826
44	48,3	33,7	RC-2-4833	RC-4-4833
18	48,3	42,4	RC-2-4842	RC-4-4842
117	60,3	21,3	RC-2-6021	RC-4-6021
100	60,3	26,9	RC-2-6026	RC-4-6026
80	60,3	33,7	RC-2-6033	RC-4-6033
54	60,3	42,4	RC-2-6042	RC-4-6042
36	60,3	48,3	RC-2-6048	RC-4-6048
148	76,1	26,9	RC-2-7626	RC-4-7626
127	76,1	33,7	RC-2-7633	RC-4-7633
101	76,1	42,4	RC-2-7642	RC-4-7642
83	76,1	48,3	RC-2-7648	RC-4-7648
47	76,1	60,3	RC-2-7660	RC-4-7660
166	88,9	33,7	RC-2-8833	RC-4-8833
139	88,9	42,4	RC-2-8842	RC-4-8842
122	88,9	48,3	RC-2-8848	RC-4-8848
86	88,9	60,3	RC-2-8860	RC-4-8860
38	88,9	76,1	RC-2-8876	RC-4-8876
262	114,3	26,9	RC-2-11426	RC-4-11426
242	114,3	33,7	RC-2-11433	RC-4-11433
216	114,3	42,4	RC-2-11442	RC-4-11442
198	114,3	48,3	RC-2-11448	RC-4-11448
162	114,3	60,3	RC-2-11460	RC-4-11460
115	114,3	76,1	RC-2-11476	RC-4-11476
76	114,3	88,9	RC-2-11488	RC-4-11488
238	139,7	60,3	RC-2-13960	RC-4-13960
191	139,7	76,1	RC-2-13976	RC-4-13976
152	139,7	88,9	RC-2-13988	RC-4-13988
76	139,7	114,3	RC-2-139114	RC-4-139114
324	168,3	60,3	RC-2-16860	RC-4-16860
277	168,3	76,1	RC-2-16876	RC-4-16876
238	168,3	88,9	RC-2-16888	RC-4-16888
162	168,3	114,3	RC-2-168114	RC-4-168114
86	168,3	139,7	RC-2-168139	RC-4-168139
391	219,1	88,9	RC-2-21988	RC-4-21988
314	219,1	114,3	RC-2-219114	RC-4-219114
238	219,1	139,7	RC-2-219139	RC-4-219139
152	219,1	168,3	RC-2-219168	RC-4-219168
314	273,0	168,3	RC-2-273168	RC-4-273168
161	273,0	219,1	RC-2-273219	RC-4-273219
312	323,9	219,1	RC-2-323219	RC-4-323219
152	323,9	273,0	RC-2-323273	RC-4-323273

Certificat 3.1B
disponible



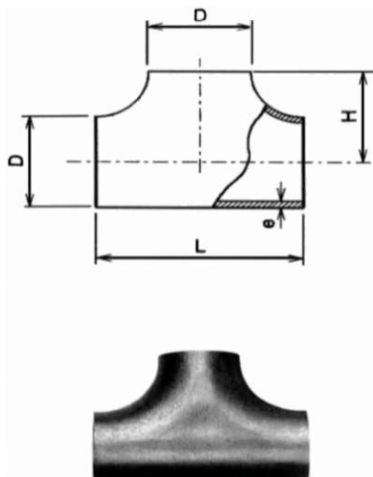
R	e	D	304 L	316 L
20	1,6	13,5	CS-2-1316	CS-4-1316
25	1,6	17,2	CS-2-1716	CS-4-1716
27	1,6	21,3	CS-2-2116	CS-4-2116
27	2,0	21,3	CS-2-212	CS-4-212
27	2,6	21,3	CS-2-2126	CS-4-2126
28	1,6	26,9	CS-2-2616	CS-4-2616
28	2,0	26,9	CS-2-262	CS-4-262
28	2,6	26,9	CS-2-2626	CS-4-2626
38	1,6	33,7	CS-2-3316	CS-4-3316
38	2,0	33,7	CS-2-332	CS-4-332
38	3,2	33,7	CS-2-3332	CS-4-3332
47	1,6	42,4	CS-2-4216	CS-4-4216
47	2,0	42,4	CS-2-422	CS-4-422
47	3,2	42,4	CS-2-4232	CS-4-4232
57	1,6	48,3	CS-2-4816	CS-4-4816
57	2,0	48,3	CS-2-482	CS-4-482
57	3,2	48,3	CS-2-4832	CS-4-4832
76	1,6	60,3	CS-2-6016	CS-4-6016
76	2,0	60,3	CS-2-602	CS-4-602
76	3,6	60,3	CS-2-6036	CS-4-6036
95	2,0	76,1	CS-2-762	CS-4-762
95	3,6	76,1	CS-2-7636	CS-4-7636
114	2,0	88,9	CS-2-882	CS-4-882
152	2,0	114,3	CS-2-1142	CS-4-1142
190	2,0	139,7	CS-2-1392	CS-4-1392
229	2,0	168,3	CS-2-1682	CS-4-1682

Certificat 3.1B
disponible



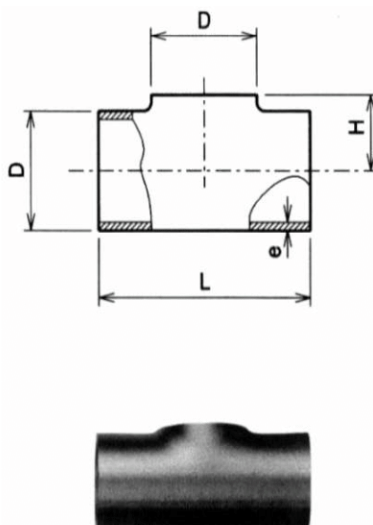
R	e	D	304 L	316 L
30	1,6	17,2	CSGR-2-1716	
45	1,6	21,3	CSGR-2-2116	CSGR-4-2116
45	2,0	21,3	CSGR-2-212	CSGR-4-212
57	1,6	26,9	CSGR-2-2616	CSGR-4-2616
57	2,0	26,9	CSGR-2-262	CSGR-4-262
72	2,0	33,7	CSGR-2-332	CSGR-4-332
93	2,0	42,4	CSGR-2-422	CSGR-4-422
108	2,0	48,3	CSGR-2-482	CSGR-4-482
135	2,0	60,3	CSGR-2-602	CSGR-4-602
175	2,0	76,1	CSGR-2-762	CSGR-4-762
205	2,0	88,9	CSGR-2-882	CSGR-4-882
270	2,0	114,3	CSGR-2-1142	CSGR-4-1142

Certificat 3.1B
disponible



e	L	H	D	304 L	316 L
1,6	51	25,0	21,3	TM-2-21	TM-4-21
1,6	57	29,0	26,9	TM-2-26	TM-4-26
2,0	76	38,0	33,7	TM-2-33	TM-4-33
2,0	95	48,0	42,4	TM-2-42	TM-4-42
2,0	114	57,0	48,3	TM-2-48	TM-4-48
2,0	127	64,0	60,3	TM-2-60	TM-4-60
2,0	152	76,0	76,1	TM-2-76	TM-4-76
2,0	171	86,0	88,9	TM-2-88	TM-4-88
2,0	210	105,0	114,3	TM-2-114	TM-4-114
2,0	248	124,0	139,7	TM-2-139	TM-4-139
2,0	286	143,0	168,3	TM-2-168	TM-4-168
2,0	356	178,0	219,1	TM-2-219	TM-4-219

Certificat 3.1B
disponible



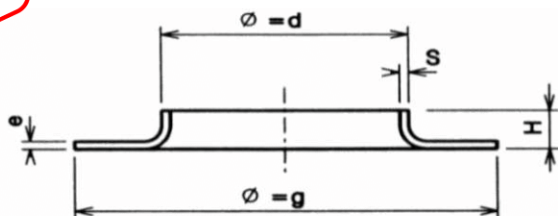
e	L	H	D	304 L	316 L
1,6	51	10,0	17,2	T-2-17	T-4-17
1,6	51	12,0	21,3	T-2-21	T-4-21
1,6	57	15,0	26,9	T-2-26	T-4-26
2,0	76	19,0	33,7	T-2-33	T-4-33
2,0	95	23,0	42,4	T-2-42	T-4-42
2,0	114	26,0	48,3	T-2-48	T-4-48
2,0	127	33,0	60,3	T-2-60	T-4-60
2,0	152	41,0	76,1	T-2-76	T-4-76
2,0	171	47,0	88,9	T-2-88	T-4-88
2,0	210	61,0	114,3	T-2-114	T-4-114
2,0	248	74,0	139,7	T-2-139	T-4-139
2,0	286	89,0	168,3	T-2-168	T-4-168
2,0	356	116,0	219,1	T-2-219	T-4-219

304 L

Collet embouti ISO pour tube mince

316 L

Certificat 3.1B
disponible



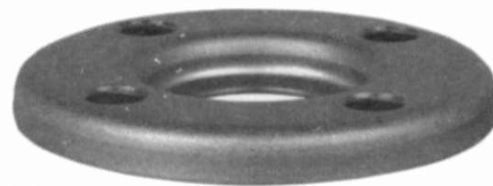
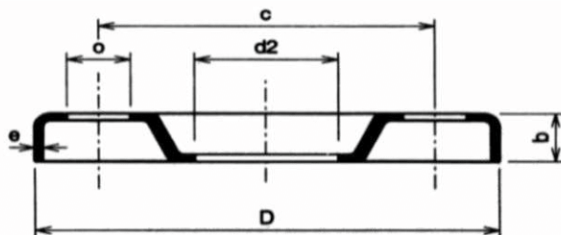
d	S	e	g	h	DN	304 L	316 L
17,2	1,6	2,0	40,0	6	10	COM-2-17	COM-4-17
21,3	1,6	2,0	45,0	6	15	COM-2-21	COM-4-21
26,9	1,6	2,0	58,0	7	20	COM-2-26	COM-4-26
33,7	1,6	2,0	68,0	9	25	COM-2-33	COM-4-33
42,4	1,6	2,0	78,0	10	32	COM-2-42	COM-4-42
48,3	1,6	2,0	88,0	10	40	COM-2-48	COM-4-48
60,3	1,6	2,0	102,0	12	50	COM-2-60	COM-4-60
76,1	1,6	2,0	122,0	12	65	COM-2-76	COM-4-76
88,9	2,0	2,0	138,0	13	80	COM-2-88	COM-4-88
114,3	2,0	2,0	158,0	13	100	COM-2-114	COM-4-114
139,7	2,0	2,0	188,0	14	125	COM-2-139	COM-4-139
168,3	2,0	2,0	212,0	18	150	COM-2-168	COM-4-168
219,1	2,0	2,0	268,0	22	200	COM-2-219	COM-4-219
273,0	2,0	2,0	320,0	22	250	COM-2-273	COM-4-273
323,9	2,0	2,0	370,0	22	300	COM-2-323	COM-4-323
355,6	3,0	3,0	430,0	24	350	COM-2-355	COM-4-355
406,4	3,0	3,0	482,0	24	400	COM-2-406	COM-4-406

304

Bride tournante emboutie - DIN 2642 - PN 10 -

316

Certificat 3.1B
disponible



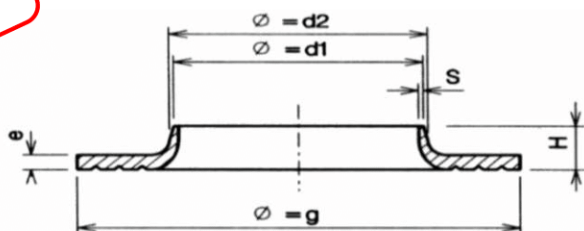
Tube d1	D	b	d2	e	Perçage		DN	304	316
					c	nb x Ø			
21,3	95	11,5	24	3,0	65	4x13,5	15	BTE-2-15	BTE-4-15
26,9	105	14	30	3,0	75	4x13,5	20	BTE-2-20	BTE-4-20
33,7	115	16,5	37	3,0	85	4x13,5	25	BTE-2-25	BTE-4-25
42,4	140	17	46	3,0	100	4x17,5	32	BTE-2-32	BTE-4-32
48,3	150	17,5	54	4,0	110	4x17,5	40	BTE-2-40	BTE-4-40
60,3	165	19,5	65	4,0	125	4x17,5	50	BTE-2-50	BTE-4-50
76,1	185	21	81	4,0	145	4x17,5	65	BTE-2-65	BTE-4-65
88,9	200	22	94	5,0	160	8x17,5	80	BTE-2-80	BTE-4-80
114,3	220	23	119	6,0	180	8x17,5	100	BTE-2-100	BTE-4-100
139,7	250	25	145	6,0	210	8x17,5	125	BTE-2-125	BTE-4-125
168,3	285	27	173	7,0	240	8x21,5	150	BTE-2-150	BTE-4-150
219,1	340	31	225	8,0	295	8x21,5	200	BTE-2-200	BTE-4-200
273,0	395	34	276	8,0	350	12x22	250	BTE-2-250	BTE-4-250
323,9	445	38	326	8,0	400	12x22	300	BTE-2-300	BTE-4-300

304 L

Collet épais usiné

316 L

Certificat 3.1B
disponible



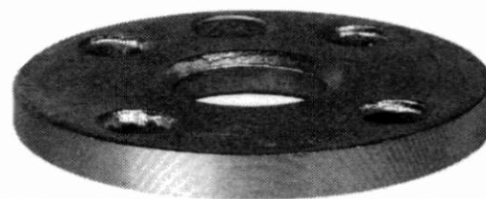
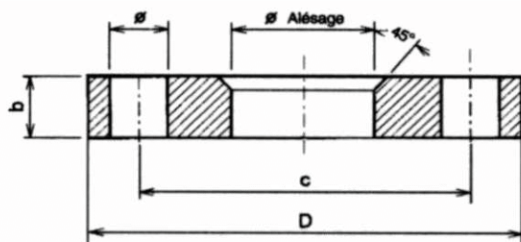
d1	d2	S	e	g	H	DN	304 L	316 L
21,3	22,5	[1,6-2,6]	3,0	47	7,0	15	COE-2-21	COE-4-21
26,9	27,2	[1,6-2,6]	3,0	58	9,0	20	COE-2-26	COE-4-26
33,7	37	[1,6-3,2]	4,0	68	10,5	25	COE-2-33	COE-4-33
42,4	46	[1,6-3,2]	4,0	78	14,0	32	COE-2-42	COE-4-42
48,3	51	[1,6-3,2]	4,0	88	14,0	40	COE-2-48	COE-4-48
60,3	63,5	[1,6-3,6]	4,0	102	16,0	50	COE-2-60	COE-4-60
76,1	79,5	[1,6-3,6]	5,0	122	19,0	65	COE-2-76	COE-4-76
88,9	93,5	[2-4]	5,0	133	23,0	80	COE-2-88	COE-4-88
114,3	117,5	[2-4,5]	5,0	158	26,0	100	COE-2-114	COE-4-114
139,7	143	[2-5]	5,0	184	26,0	125	COE-2-139	COE-4-139
168,3	172	[2-5]	5,0	212	29,0	150	COE-2-168	COE-4-168
219,1	224	[2-5]	5,0	268	32,0	200	COE-2-219	COE-4-219
273	277	[3-5]	5,0	320	32,0	250	COE-2-273	COE-4-273
323,9	328	[3-5]	5,0	370	36,0	300	COE-2-323	COE-4-323
355,6	359,5	[3-5]	5,0	430	40,0	350	COE-2-355	COE-4-355
406,4	410	[3-5]	6,0	482	48,0	400	COE-2-406	COE-4-406

304 L

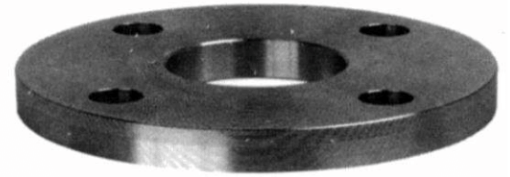
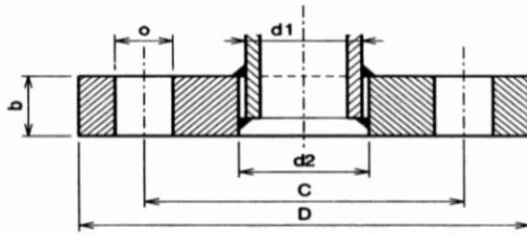
Bride plate tournante EN 1092-1 type 02A

316 L

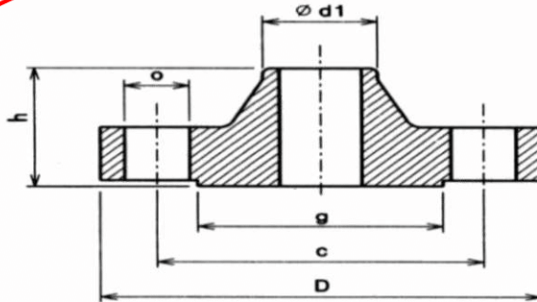
Certificat 3.1B
disponible



Ø tube	D	Ø Alésage	b	Perçage		PN	DN	304 L	316 L
				c	nb x Ø				
21,3	95	24	14	65,0	4x14	PN40	15	BPT-2-15	BPT-4-15
26,9	105	31	16	75,0	4x14	PN40	20	BPT-2-20	BPT-4-20
33,7	115	38	16	85,0	4x14	PN40	25	BPT-2-25	BPT-4-25
42,4	140	47	18	100,0	4x18	PN40	32	BPT-2-32	BPT-4-32
48,3	150	53	18	110,0	4x18	PN40	40	BPT-2-40	BPT-4-40
60,3	165	65	19	125,0	4x18	PN16	50	BPT-2-50	BPT-4-50
76,1	185	81	20	145,0	8x18	PN16	65	BPT-2-65	BPT-4-65
88,9	200	94	20	160,0	8x18	PN16	80	BPT-2-80	BPT-4-80
114,3	220	120	22	180,0	8x18	PN16	100	BPT-2-100	BPT-4-100
139,7	250	145	22	210,0	8x18	PN16	125	BPT-2-125	BPT-4-125
168,3	285	174	24	240,0	8x22	PN16	150	BPT-2-150	BPT-4-150
219,1	340	226	24	295,0	8x22	PN10	200	BPT-2-200	BPT-4-200

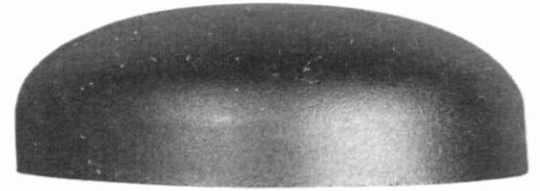
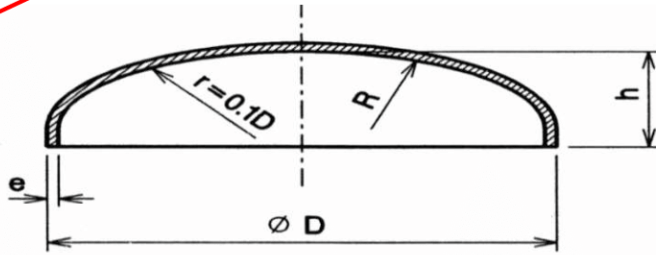
304 L**Bride plate à souder EN 1092-1 type 01A****316 L****Certificat 3.1B
disponible**

d2	D	b	Perçage		d1	PN	DN	304L	316L
			c	nb x Ø					
22	95	14	65	4x14	21,3	PN40	15	BPAS-2-15	BPAS-4-15
27,5	105	16	75	4x14	26,9	PN40	20	BPAS-2-20	BPAS-4-20
34,5	115	16	85	4x14	33,7	PN40	25	BPAS-2-25	BPAS-4-25
43,5	140	18	100	4x18	42,4	PN40	32	BPAS-2-32	BPAS-4-32
49,5	150	18	110	4x18	48,3	PN40	40	BPAS-2-40	BPAS-4-40
61,5	165	19	125	4x18	60,3	PN16	50	BPAS-2-50	BPAS-4-50
77,5	185	20	145	8x18	76,1	PN16	65	BPAS-2-65	BPAS-4-65
90,5	200	20	160	8x18	88,9	PN16	80	BPAS-2-80	BPAS-4-80
116	220	22	180	8x18	114,3	PN16	100	BPAS-2-	BPAS-4-
141,5	250	22	210	8x18	139,7	PN16	125	BPAS-2-	BPAS-4-
170,5	285	24	240	8x22	168,3	PN16	150	BPAS-2-	BPAS-4-
221,5	340	24	295	8x22	219,1	PN10	200	BPAS-2-	BPAS-4-
276,5	395	26	350	12x22	273,0	PN10	250	BPAS-2-	BPAS-4-
323,9	445	26	400	12x22	323,9	PN10	300	BPAS-2-	BPAS-4-

304 L**Bride à collerette EN 1092-1 type 11B****316 L****Certificat 3.1B
disponible**

d1	D	h	g	Perçage		PN	DN	304L	316L
				c	nb x Ø				
21,3	95	38	45	65	4x14	PN40	15	BAC-2-15	BAC-4-15
26,9	105	40	58	75	4x14	PN40	20	BAC-2-20	BAC-4-20
33,7	115	40	68	85	4x14	PN40	25	BAC-2-25	BAC-4-25
42,4	140	42	78	100	4x18	PN40	32	BAC-2-32	BAC-4-32
48,3	150	45	88	110	4x18	PN40	40	BAC-2-40	BAC-4-40
60,3	165	45	102	125	4x18	PN16	50	BAC-2-50	BAC-4-50
76,1	185	45	122	145	8x18	PN16	65	BAC-2-65	BAC-4-65
88,9	200	50	138	160	8x18	PN16	80	BAC-2-80	BAC-4-80
114,3	220	52	158	180	8x18	PN16	100	BAC-2-100	BAC-4-100
139,7	250	55	188	210	8x18	PN16	125	BAC-2-125	BAC-4-125
168,3	285	55	212	240	8x22	PN16	150	BAC-2-150	BAC-4-150
219,1	340	62	268	295	8x22	PN10	200	BAC-2-200	BAC-4-200

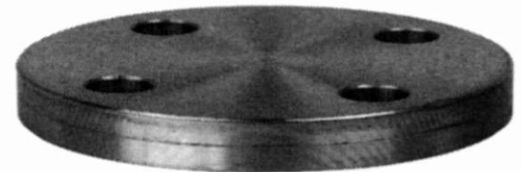
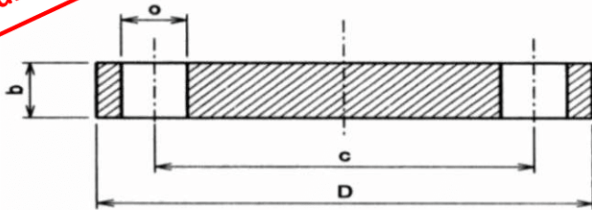
Certificat 3.1B
disponible



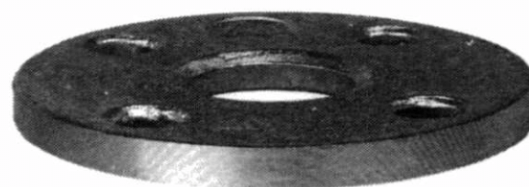
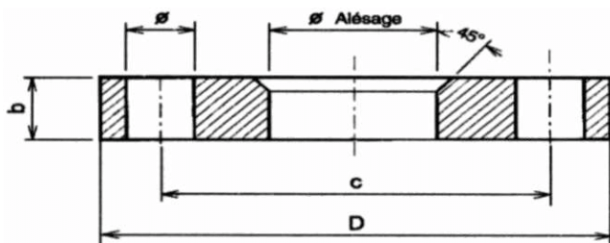
*e=épaisseur de départ

D	h	R	e*	DN	304 L	316 L
17,2	13	17	2	10	FO-2-17	FO-4-17
21,3	15	21	2	15	FO-2-21	FO-4-21
26,9	11	27	2	20	FO-2-26	FO-4-26
33,7	13	34	2	25	FO-2-33	FO-4-33
42,4	17	42	2	32	FO-2-42	FO-4-42
48,3	17	48	2	40	FO-2-48	FO-4-48
60,3	21	60	2	50	FO-2-60	FO-4-60
76,1	27	76	2	65	FO-2-76	FO-4-76
88,9	28	89	2	80	FO-2-88	FO-4-88
114,3	31	114	2	100	FO-2-114	FO-4-114
139,7	35	140	2	125	FO-2-139	FO-4-139
168,3	42	168	2	150	FO-2-168	FO-4-168
219,1	50	219	2	200	FO-2-219	FO-4-219
273	60	273	2	250	FO-2-273	FO-4-273
323,9	72	324	2	300	FO-2-323	FO-4-323
355,6	84	355	3	350	FO-2-355	FO-4-355
406,4	96	406	3	400	FO-2-406	FO-4-406

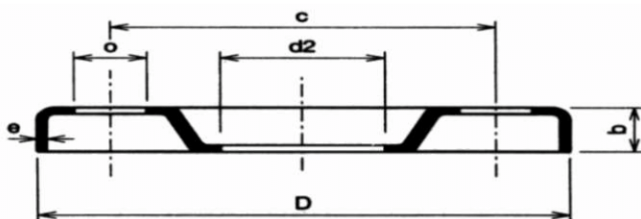
Certificat 3.1B
disponible



D	b	Perçage		PN	DN	304 L	316 L
		c	nb x Ø				
95	16	65	4x14	PN40	15	TAM-2-15	TAM-4-15
105	18	75	4x14	PN40	20	TAM-2-20	TAM-4-20
115	18	85	4x14	PN40	25	TAM-2-25	TAM-4-25
140	18	100	4x18	PN40	32	TAM-2-32	TAM-4-32
150	18	110	4x18	PN40	40	TAM-2-40	TAM-4-40
165	18	125	4x18	PN16	50	TAM-2-50	TAM-4-50
185	18	145	8x18	PN16	65	TAM-2-65	TAM-4-65
200	20	160	8x18	PN16	80	TAM-2-80	TAM-4-80
220	20	180	8x18	PN16	100	TAM-2-100	TAM-4-100
250	22	210	8x18	PN16	125	TAM-2-125	TAM-4-125
285	22	240	8x22	PN16	150	TAM-2-150	TAM-4-150
340	24	295	8x22	PN10	200	TAM-2-200	TAM-4-200



Tube d1	D	Ø alésage	b	Perçage		PN	DN	AS 13
				c	nb x Ø			
17,2	90	19	12	60	4x14	PN10	10	BPT-ALU-10
21,3	95	24	12	65	4x14	PN10	15	BPT-ALU-15
26,9	105	30	12	75	4x14	PN10	20	BPT-ALU-20
33,7	115	36	12	85	4x14	PN10	25	BPT-ALU-25
42,4	140	46	16	100	4x18	PN10	32	BPT-ALU-32
48,3	150	54	16	110	4x18	PN10	40	BPT-ALU-40
60,3	165	65	16	125	4x18	PN10	50	BPT-ALU-50
76,1	185	81	16	145	4x18	PN10	65	BPT-ALU-65
88,9	200	94	18	160	8x18	PN10	80	BPT-ALU-80
114,3	220	119	18	180	8x18	PN10	100	BPT-ALU-100
139,7	250	144	18	210	8x18	PN10	125	BPT-ALU-125
168,3	285	173	18	240	8x22	PN10	150	BPT-ALU-150
219,1	340	225	20	295	8x22	PN10	200	BPT-ALU-200
273,0	395	279	22	350	12x22	PN10	250	BPT-ALU-250
323,9	445	329	22	400	12x22	PN10	300	BPT-ALU-300
355,6	505	362	22	460	16x22	PN10	350	BPT-ALU-350
406,4	565	413	25	515	16x25	PN10	400	BPT-ALU-400



Tube d1	D	b	d2	e	Perçage		DN	A 37
					c	nb x Ø		
21,3	95	11,5	24	3	65	4x13,5	15	BTE-AZJ-15
26,9	105	14	30	3	75	4x13,5	20	BTE-AZJ-20
33,7	115	16,5	37	3	85	4x13,5	25	BTE-AZJ-25
42,4	140	17	46	3	100	4x17,5	32	BTE-AZJ-32
48,3	150	17,5	54	4	110	4x17,5	40	BTE-AZJ-40
60,3	165	19,5	65	4	125	4x17,5	50	BTE-AZJ-50
76,1	185	21	81	4	145	4x17,5	65	BTE-AZJ-65
88,9	200	22	94	5	160	8x17,5	80	BTE-AZJ-80
114,3	220	23	119	6	180	8x17,5	100	BTE-AZJ-100
139,7	250	25	145	6	210	8x17,5	125	BTE-AZJ-125
168,3	285	27	173	7	240	8x21,5	150	BTE-AZJ-150
219,1	340	31	225	8	295	8x21,5	200	BTE-AZJ-200
273,0	395	34	276	8	350	12x22	250	BTE-AZJ-250
323,9	445	38	326	8	400	12x22	300	BTE-AZJ-300

FACILITEZ-VOUS LA "VIS" AVEC **interinox**.



- AUTOMATISEZ VOS APPROVISIONNEMENTS (GPA)
- TRANSMETTEZ DIRECTEMENT VOS COMMANDES
- SIMPLIFIEZ LA GESTION DE VOS STOCKS (KANBAN)
- NE SOYEZ PLUS EN RUPTURE DE STOCK

Notre système de gestion de commandes automatisé apporte la solution à la simplification de vos approvisionnements.



- DONNEZ DE LA VISIBILITÉ À VOTRE TRÉSORERIE
- LISSEZ VOS DÉPENSES

Facilités financières (soumises à condition d'acceptation)



- VISITEZ LA BOUTIQUE EN LIGNE
- PASSEZ VOS COMMANDES
- CONSULTEZ NOS CATALOGUES PRODUITS

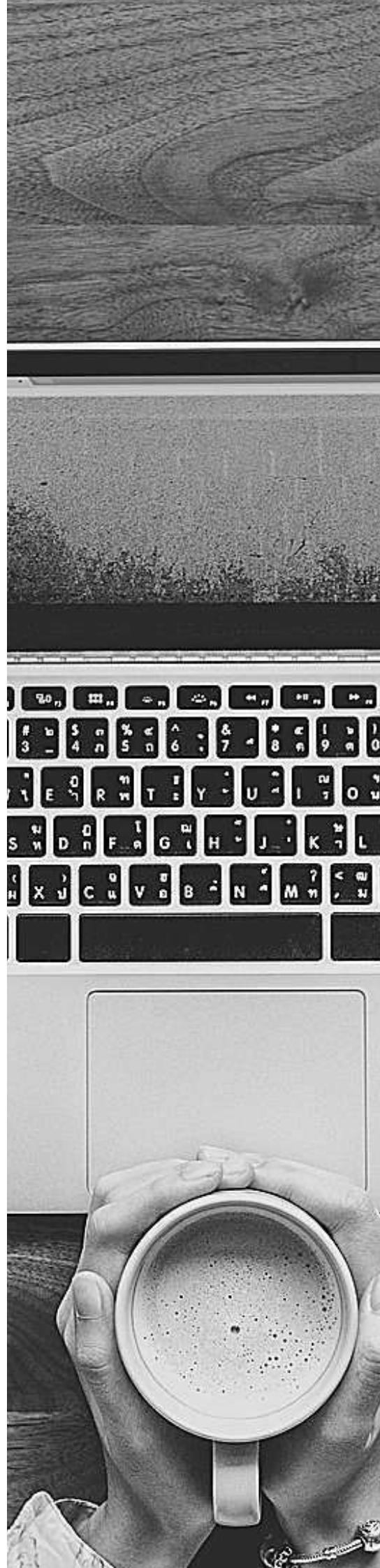
D'où vous voulez, quand vous voulez...



SIÈGE SOCIAL

7 AVENUE MARECHAL DE LATTRE DE TASSIGNY
Z.I - BP 52
69882 MEYZIEU CEDEX - FRANCE
TÉL : (33) 04 72 45 28 70

<https://www.interinox.fr>





40 DE SAVOIR-FAIRE DANS LA FIXATION

ANNÉES

inter inOX.

<https://www.interinox.fr>

email : web@interinox.fr

7 AVENUE MARECHAL DE LATTRE DE TASSIGNY

Z.I - BP 52

69882 MEYZIEU CEDEX - FRANCE

Tél : (33) 04 72 45 28 70